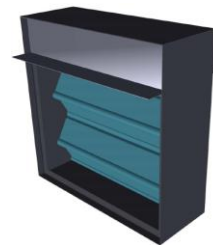


- UL 555 & CAN/ULC-S112 Classified Dynamic Fire Damper, 1 ½ Hr. Label (File # R25565).
- NFPA 80, 90A & 101 compliant.
- NBC and IBC building codes compliant.



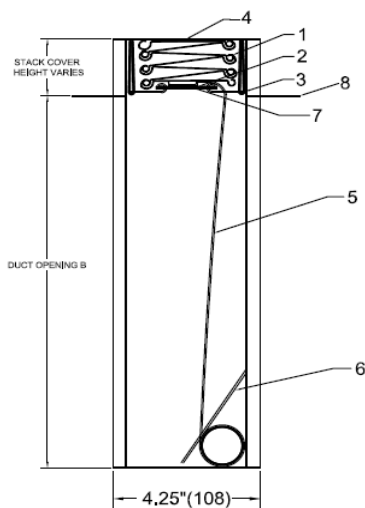
### STANDARD CONSTRUCTION

**DEPTH:** 4 ¼" (108).

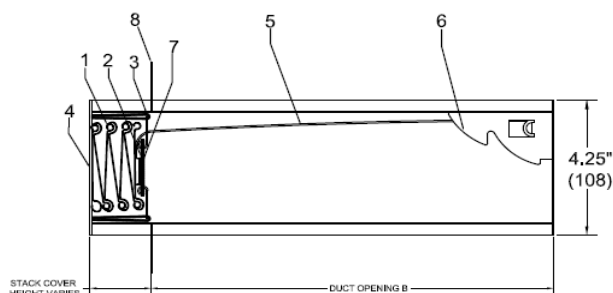
**FRAME:** Roll formed 20 Ga. galvanized steel with hemmed edge.

**BLADE:** Roll formed 22 Ga. galvanized steel.  
Interlocking curtain type blades.

**FUSIBLE LINK:** 165°F (74 C).



MODEL 51BVD  
(VERTICAL MOUNT)



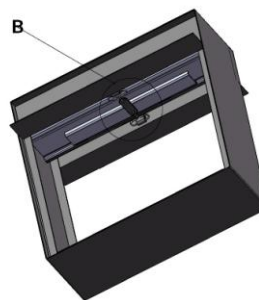
MODEL 51BHD  
(HORIZONTAL MOUNT)

### FIRE DAMPER COMPONENTS

- |                          |                          |
|--------------------------|--------------------------|
| 1. Blade                 | 5. Constant Force Spring |
| 2. Fusible Link Assembly | 6. Lock Ramp             |
| 3. Link Strap            | 7. Blade Stiffener       |
| 4. Frame                 | 8. Blade Stack Cover     |

### OPTIONAL CONSTRUCTION

- Factory supplied Sleeve – 22, 20, 18 or 16 GA.  
\*Sleeve length required
- Access Door factory mounted in a common sleeve to ensure compliance with UL installation requirements
- 212°F (100 C) Fusible Link [max. size 48 x 44 (1219 x 1118).
- 1 ½" x 1 ½" mounting angles



DETAIL B

### DYNAMIC CLOSURE RATINGS:

- 2000 fpm (10.2 m/s) on all sizes, vertical or horizontal mount.
- 5000 fpm (25.4 m/s) vertical mount only, up to 24" x 20" (610 x 508) duct size.
- 4" w.g. (1kPa) maximum pressure on all sizes.

### MAINTENANCE RECOMMENDATIONS:

NFPA 80 advises that fire dampers be inspected and tested 1 year after installation, then every 4 years minimum. More frequent inspections may be required due to system use and air conditions, or applicable local codes.

### NOTES:

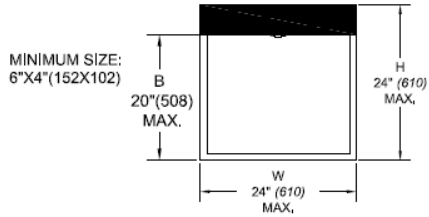
Dampers are furnished approximately ¼" (6) smaller than the given duct dimensions.

These dynamic dampers are UL/ULC approved for use in HVAC systems where the fans remain on in the event of fire.

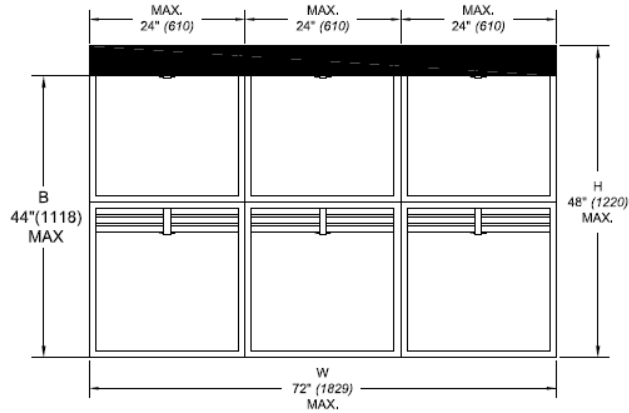
1½ hr. labeled fire dampers are suitable for use in fire separations with a fire resistance rating of 2 hours or less.

**Fire dampers must be installed in accordance with manufacturer's instructions. Refer to Alumavent installation instructions for details.**

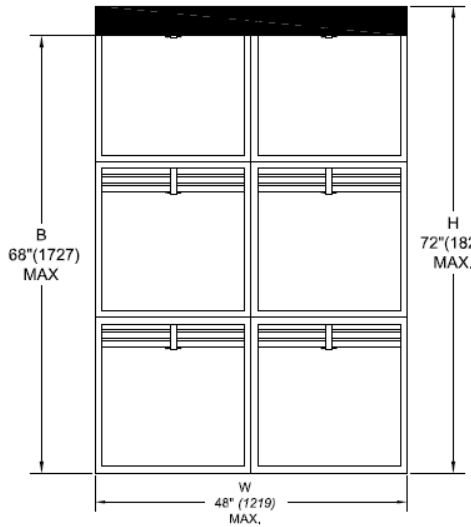
SINGLE SECTION DAMPER  
-VERTICAL OR HORIZONTAL MOUNT



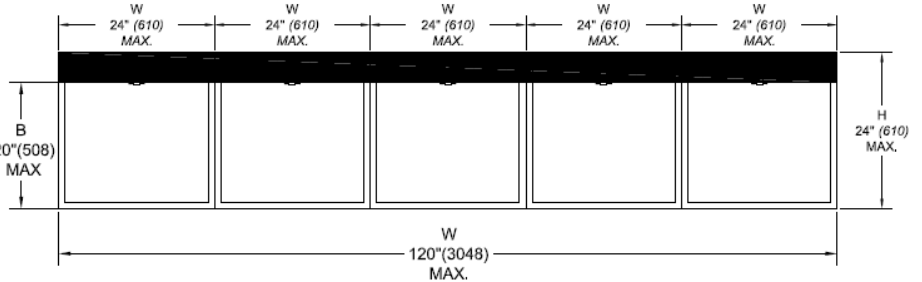
MULTIPLE SECTION DAMPER  
-VERTICAL MOUNT ONLY



MULTIPLE SECTION DAMPER  
-VERTICAL MOUNT ONLY



MULTIPLE SECTION DAMPER  
-VERTICAL MOUNT ONLY



NOTE: SEE TYPE B DYNAMIC SIZING CHART [SC51BD](#) FOR OVERALL DAMPER DIMENSIONS.

REF. #	QTY.	DUCT WIDTH (W)	DUCT HEIGHT (H)	MOUNT (V/H)	ACCESSORIES

\*DAMPER WILL BE MANUFACTURED APPROXIMATELY ¼" (6) SMALLER THAN GIVEN DUCT DIMENSIONS.

PROJECT NAME:

ENGINEER:

CONTRACTOR:

SUBMITTAL DATE: